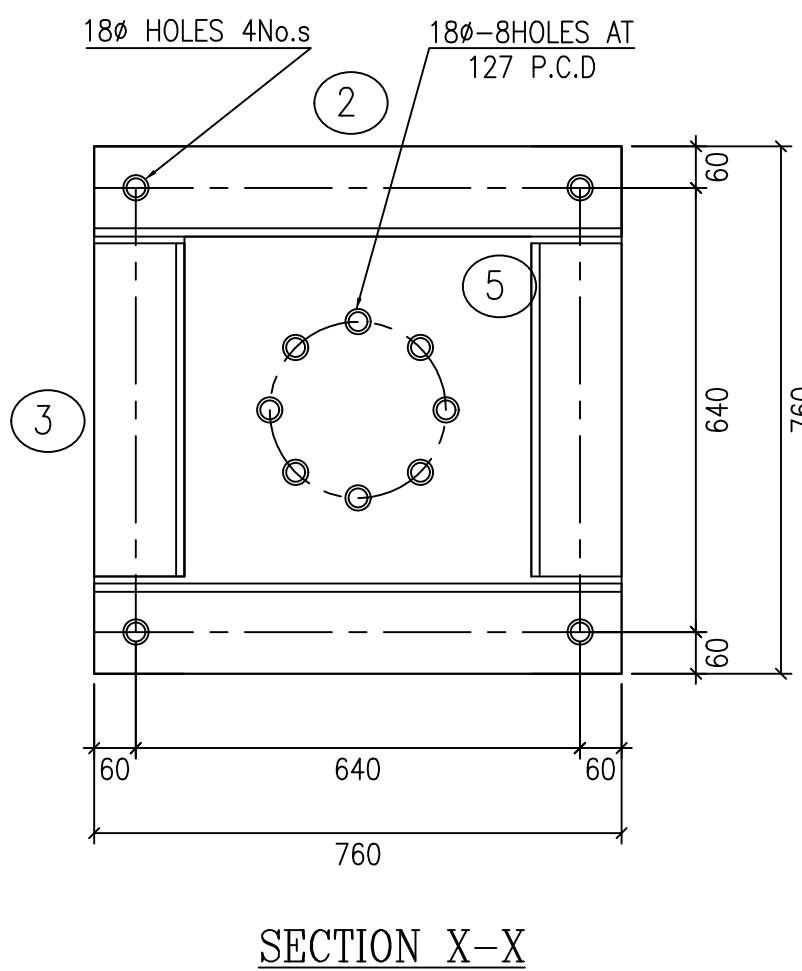
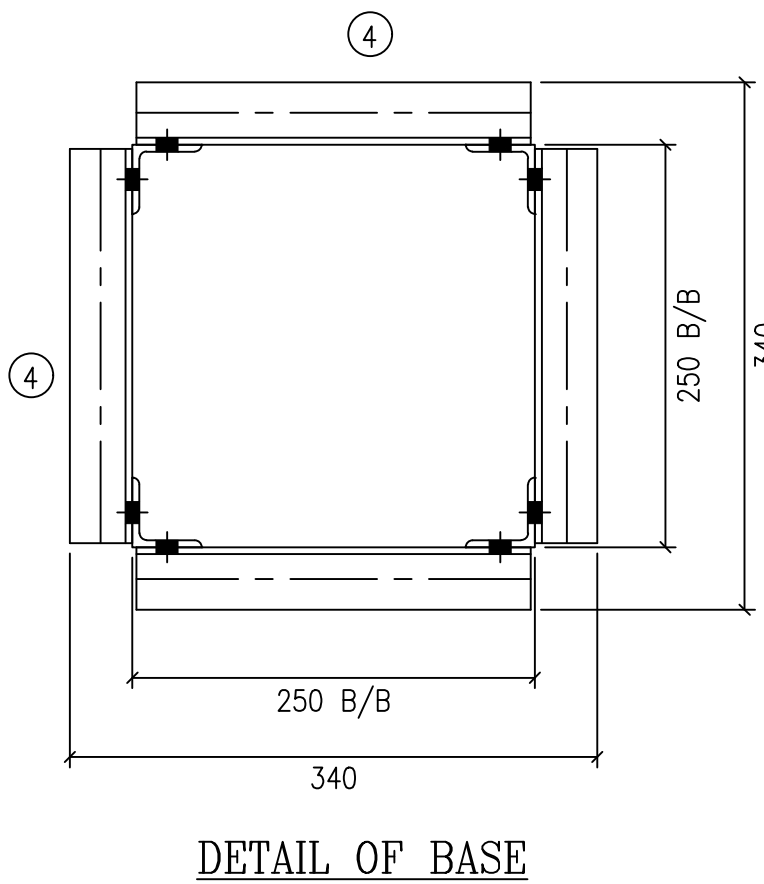



BILL OF MATERIAL				
ITEM NO.	SECTION DESCRIPTION	QTY	Unit Wt.	WEIGHT
1PI-1	ISA-50X50X6-4468 mm	2	4.50	40.21
1PI-1X	ISA-50X50X6-4468 mm	2	4.50	40.21
1PI-2	ISA-65X65X6-380 mm	2	5.80	4.40
1PI-3	ISA-65X65X6-244 mm	2	5.80	2.83
1PI-4	ISA-45X45X5-244 mm	36	3.40	29.86
1PI-5	PLT-380X380X8 mm	1	9.06	9.06
TOTAL WEIGHT IN KGS.				126.60



LIST OF BOLTS & NUTS			
DESCRIPTION OF BOLT	QTY	Unit Wt.	Weight
M16 BOLT X 35 mm LG	85	0.124	10.54
M16 BOLT X 40 mm LG	12	0.132	1.584
3.5 TH.SP.WASHER FOR 16Ø BOLT	97	0.009	0.873
TOTAL WEIGHT		13.00	

- NOTES:
- ALL DIMENSIONS ARE IN MM.
  - ALL HOLES ARE 17.5MM DIA. FOR 16MM DIA. BOLTS.
  - ALL STEEL SECTIONS SHALL CONFORM TO IS: 2062.
  - ALL STEEL SECTIONS, BOLTS, NUTS & PACK WASHERS ARE TO BE HOT DIP GALVANIZED.
  - ALL BOLTS SHALL CONFORM TO IS:12427(2001), WITH MECHANICAL PROPERTIES CLASS 5.6 AND NUTS SHALL CONFORM TO IS: 1367(PART-VI) OF PROPERTIES CLASS-5.
  - DIMENSIONAL AND WEIGHT TOLERANCE  $\pm 10\%$ .
  - THE HEIGHT OF STRUCTURE SHALL BE ADJUSTED TO MATCH WITH LIVE POINT HEIGHT (LPH) AS PER APPROVED SECTIONAL DRAWING.
  - THE EQUIPMENT MOUNTING DETAILS SHALL BE MATCHED WITH APPROVED EQUIPMENT DRAWINGS.

Approval Ltr No.: CEE/P&C/SET/EE(TL)/AEE-9/2021-22/10039-49 Dtd:05.10.2021

						KPTCL/P&C/TECH/110KV/PI										EQUIPMENT MOUNTING STRUCTURE FOR 110KV PI (FOR 110/11KV SUBSTATIONS ONLY)			
									AEE		EE		SEE		CEE				
REV No	REVISION DETAILS					DRAWING NO.			DRAWN/CHECKED		SUBMITTED		RECEIVED		APPROVED				
1		2			3								6		7		8		